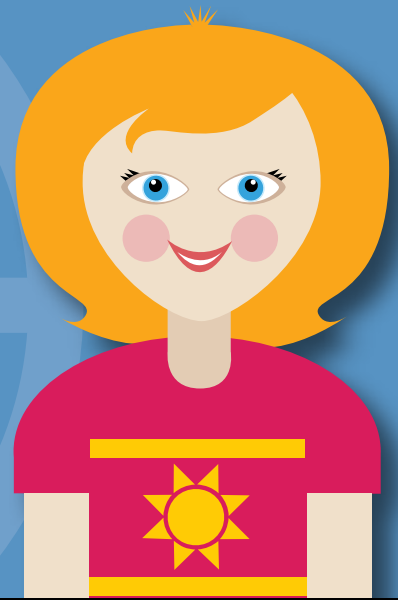




Does your city have a Japanese twin? Should it?



An Australia – Japan case study

Have you ever driven through a town or suburb and seen a sign indicating that the place you are in is twinned with somewhere else in the world? Why would communities want to foster some type of link with places and people thousands of kilometres away? What would they hope to achieve through this relationship? How has the relationship been of benefit to the local community, and what signs of the relationship other than a sign on a road would you expect to see?

You may be surprised to know that Japanese cities represent the largest number of cities twinned with Australian cities.

What do you know about Japan? What is Australia's relationship with Japan and is it important? What similarities and differences exist between the two countries?

In this unit, by looking at an example of an Australian city, Frankston, and its sister city, Susono, Japan, you will find out how two communities are working to build a strong, lasting and beneficial relationship.

The investigations in this unit are:

- 1 What do you know about Japan?
- 2 How has the relationship between Australia and Japan changed overtime?
- 3 What might a city gain from its sister-city relationship?
- 4 How could you create a sister-city relationship for your city or town?



- 1** Start by gathering all the information your class has about Japan. Summarise it in a grid like the one below using categories such as: Geography, Culture, Trade and Industries, Innovation and Technology, Social Customs, Population, Agriculture and Food, etc.

CATEGORY	JAPAN
Geography	
Trade and Industries	

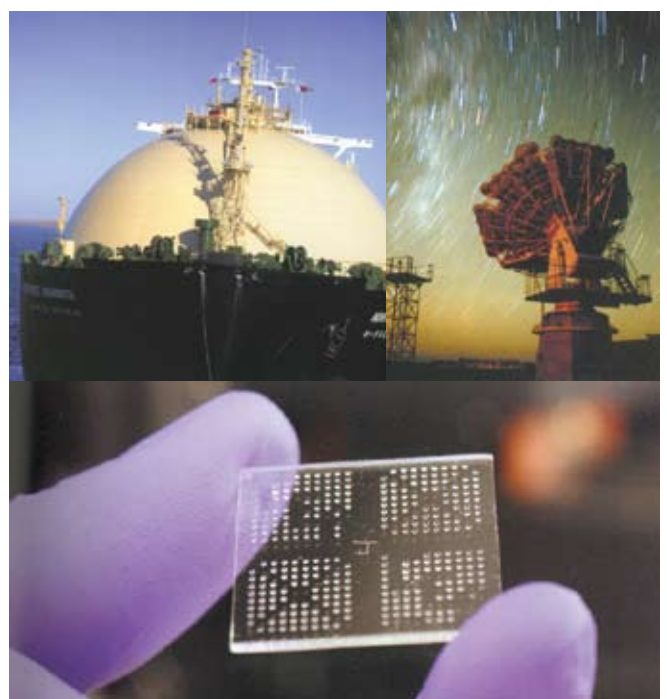
- 2** Make use of an atlas to describe the location and physical make up of Japan. In your description include: the hemisphere in which it is located, the number and name of the main Japanese islands, the distance and direction of Japan from Australia, and its nearest neighbours — using compass directions and distances in your description.
- 3** Mark these features on the map below: the location of Japan's five major cities, the names of the main islands, the location of the capital city, the names of the neighbouring countries shown on the map.



You now have completed a class audit of Japan. How complete and accurate is the audit?

Well one way to find out is to go to the CIA fact file data bank that provides significant information on all countries. The web address is: <www.cia.gov/library/publications/the-world-factbook/docs/profileguide.html>. You can also look up information about Australia and Japan on the Australian Department of Foreign Affairs and Trade website page <www.dfat.gov.au/GEO/>.

- 4** Use the information from the sites to fill in this table both on Japan (to test your first information) and on Australia (to help you understand some similarities and differences between the two countries).



Australia – Japan Comparison Information Table

ASPECT	JAPAN	AUSTRALIA
Geography	Area	
	Terrain	
	Climate	
	Natural Resources	
	Main Land Use	
	Main Natural Hazards	
	Environmental Issues	
People	Population	
	Age Structure, Growth Rate. Life Expectancy	
	Main Ethnic Groups	
	Main Religions	
	Main Languages	
	Literacy	
Government	Type	
	States, Territories, Prefectures	
	Legal System	
	Voting Age (suffrage)	
Economy	GDP	
	Labour force	
	Unemployment, Inflation	
	Main Agricultural products	
	Currency, Exchange rate	
	Main Industries	
	Top 5 Exports	
	Top 5 Export partners	
	Top 5 Imports	
	Top 5 Import partners	

- 5 Create a brief summary statement about the two countries, stressing the main similarities and differences.

How has the relationship between Australia and Japan changed over time?

It is very clear that Australia and Japan have a very important relationship today, centred on trade. Was this always the case? Did Australia and Japan always have such close ties, and if not, when did this change?

The early history of the Commonwealth of Australia was shaped by some very strong policies and cultural ideas about who could come to Australia and with whom we traded and developed cultural relationships. The *Immigration Restriction Act* of 1901 and our significant cultural and trade links with the United Kingdom ensured that Australia had limited engagement with Asian countries. However, this did not mean that we did not trade with Japan prior to World War 2. In fact Japan was a very important trade partner prior to the start of World War 2.

Look at the timeline below, Source 1. It shows a history of exchanges between Japan and Australia.

- 1 What does this timeline tell us about the relationship between Australia and Japan before World War 2? How has the relationship changed since World War 2? Has it only been about economic links and developing trade?

Look at Source 2 and answer these questions.

- 2 What items are listed as important Australian exports to Japan?
- 3 List the evidence that suggests that the economic relationship with Japan has strengthened since 1957?
- 4 In what areas have the Japanese invested in Australia? How would this be of benefit to Australia?

SOURCE 1 History of Japan – Australia Exchange

1897	Japanese consulate established in Sydney
1898	Australian diplomatic presence established in Tokyo
1901	3000 Japanese living in Australia, mostly in WA and NT (Pearling Industry)
1930s	Japan is Australia's second largest export market after UK
1936	Britain pressures Australia to reduce imports of Japanese textiles
1937	Australia and Japan agree to relax tariff barriers to aid trade
1941	Australia and Japan at war
1945	End of Pacific War
1952	San Francisco Peace Treaty signed by Australia
1953	Japanese embassy established in Australia
1957	First visit to Japan by an Australian Prime Minister — Robert Menzies
1957	First visit to Australia by a Japanese Prime Minister — Nobusuke Kishi
1957	Agreement on Commerce between Japan and Australia signed
1968	Fisheries agreement between Japan and Australia signed
1969	Taxation agreements to stop double taxation and prevention of income tax evasion by citizens of both countries.
1972	Agreement between Japan and Australia on Peaceful Uses of Nuclear Energy
1974	Cultural agreement between Australia and Japan signed
1976	Basic Treaty of Friendship and Co-operation between Japan and Australia
1995	Joint Declaration on the Australia-Japan Partnership
1997	Japan-Australia Partnership Agenda
2002	Prime Minister Junichiro Koizumi's visit to Australia marks the 7th visit by a Japanese Prime Minister since Nobusuke Kishi's visit in 1957
2008	Prime Minister Kevin Rudd's proposed visit marks the 21st visit to Japan by an Australian Prime Minister Source.

Adapted from Ministry of Foreign Affairs of Japan

SOURCE 2

Australia-Japan Commerce Agreement 1957–2008

- On 6 July 1957, in the Japanese resort town of Hakone, Australia's Minister for Trade, John McEwen, the Australian Ambassador to Japan, Sir Alan Watt, and Japan's Prime Minister and Foreign Minister, Nobusuke Kishi, signed An Agreement on Commerce between Australia and Japan.
- The Commerce Agreement set in motion Australia's most successful bilateral trade relationship in history. It also provided a strong boost to business confidence by providing a political framework for the commercial relationship contributing to the immediate expansion of two-way trade.
- By 1960, Australia had become Japan's number one supplier of wool, coal, copper concentrates and hides, and Japan's second largest source of wheat.
- In 1961, Japan imported one-sixth of the total value of Australian exports, a share which increased to one-quarter in 1971. In 1967, Japan became Australia's largest merchandise export market and it has remained so for over forty years.
- Since 1957, Australia's wheat exports to Japan have increased twenty-fold, beef exports one hundred-fold, and coal exports over two hundred-fold. In the first two decades following the signing of the Agreement, agricultural items, in particular wool, dominated Australian exports to Japan.
- As Japan's economic growth continued at breakneck speed in the 1970s and 1980s, natural resources and energy came to make up the bulk of Australia's exports to Japan. By 1976, Japan imported 47 per cent of its iron ore, 43 per cent of its coal imports and 64 per cent of its bauxite and alumina from Australia.
- By the 1980s, Japanese direct investment in Australia included real estate and finance. In 2005-06, Japan was Australia's third-largest source of foreign direct investment, with a total stock worth \$24 billion, concentrated in real estate, mining, commerce and services.
- The launch of negotiations on a bilateral FTA (Free Trade Agreement) in 2007 provides the opportunity to establish the underpinnings for the bilateral economic relationship for the next 50 years and is a particularly fitting way to commemorate the 50th anniversary of the Commerce Agreement. Japan is our largest export market.

Australian Government in Japan
www.australia.or.jp/english/seifu/50/

- 5 Look at Source 3. What does this data tell us about what we export to, and import from, Japan? Which country has the greater advantage in trade?

SOURCE 3 Economic Data Australia – Japan

Merchandise Trade with Japan 2007 (A\$m)

Exports to Japan:	31 839
	Largest export ranking
Imports from Japan:	18 042
	Third largest import ranking
Total Trade:	49 881

Major Australian Exports, 2007 (A\$m)

Coal	9,000
Iron Ore	4,501
Bovine Meat	1,908
Aluminium	1,900

Major Australian Imports, 2007 (A\$m)

Passenger motor vehicles	6.264
Transport vehicles	1,532
Civil engineering equipment	748
Non-monetary gold	748

Market Information and Analysis Section DFAT
using latest ABS, IMF and other international sources.

- 6 What can you conclude from Sources 1, 2 and 3 about Australia's relationship with Japan? Is it based purely on trade or have we developed other important aspects to the relationship?



- 1 Read the background briefing below then work in groups to establish a list of the benefits that might come to communities who have, or are thinking of creating, a sister city affiliation. Consider grouping your ideas in categories: economic, cultural, education, recreation, customs, community affairs. Once completed share your ideas with the class so that you can add more ideas to your list of potential benefits. This will form a check-list when you look at the affiliation that has developed between Frankston, Victoria, and Susono, Shizuoka Prefecture, Japan.
- 2 Look at the maps and photographs of Frankston, Victoria and Susono, Shizuoka Prefecture (Source 1) and the Fact File (Source 2). What are the differences and similarities between the two cities?
- 3 Can you see any benefits that the two cities might provide for each other through such an affiliation?

Background Briefing — Sister Cities

The concept of the sister city movement on a worldwide basis came into existence shortly after WWII. USA President Eisenhower's People to People program began in 1956. It gave a huge boost to the idea of creating sister city relationships. In 1974 the Civic Committee of People to People (which promoted affiliations between towns) became Sister Cities International.

Because the twinning idea occurred at a national level, there was no single world movement and countries created their own links using different approaches to create unions between cities or towns. It is very popular in Europe where there are thousands of cities and towns linked as Twin Cities. Here the links are very formal with agreements outlining the type of exchanges that can be undertaken.

Despite the different approaches taken by countries, they all had the same goal. It was believed that this type of affiliation between cities and people would help improve communication and understanding between people that would reduce polarisation and conflict among nations. Through these associations it was hoped that stereotypes and prejudices would be made less potent in a world still recovering from the horrors of World War 2.

The concept of creating a relationship with another town or city started as early as the 1930s in Australia. Parkes in NSW claims their affiliation with Coventry in England started in 1939. Saddleworth, SA, created a relationship with Saddleworth Parish in England in 1941, whilst one has existed between Bega, NSW, and Lytleton, Colorado, USA, since 1956. In 1963 the first sister city relationship was formed between Lismore, NSW and Yamato-Takada in Nara Prefecture, Japan. Today Australia has 470 sister city relationships with towns and cities from all over the world.

FIG 4 TO COME

SOURCE 1
The Two cities of Frankston and Susono

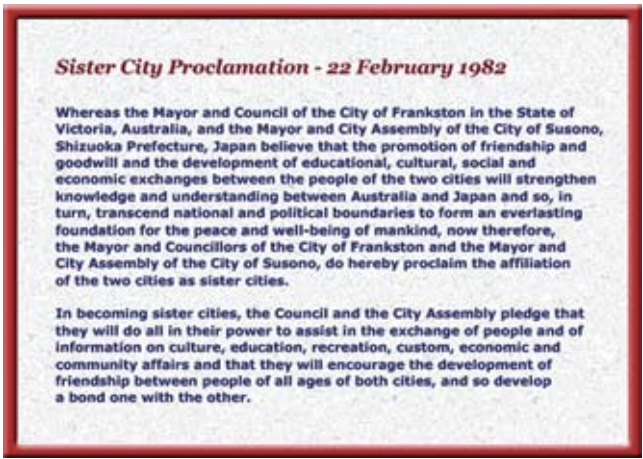


Google Earth and <http://fsfa.frankston.vic.gov.au>

SOURCE 2 Fact file — Frankston, Victoria and Susono, Japan

Details	Frankston	Susono
Established, population	Pop.118,951 est. 1854	Pop. 53, 724. est Jan1st 1971
Location	44 kms south of Melbourne, Victoria. Bayside suburb and gateway to the Mornington Peninsula.	Shizuoka Prefecture, 175 km sth west of Tokyo.
Industry	Construction, property, business services, retail trade, light manufacturing (Yazaki Affiliate Australian Arrow), personal and other services.	Light industry- Toyota Motor Corp. Mitsubishi Aluminium Corp. Yazaki Corp. Cannon (digital cameras) Kanto Auto Works.
Agriculture	Mornington Peninsula: Orchards, wineries, strawberries, market gardens.	Rice, teagrowing, strawberries, bamboo shoots, yamato potatoes, susono pork, sake, fuji grass.
Tourism	Port Phillip Bay, beaches, water sports and resorts, golf courses, wineries located on the Mornington Peninsula.	Mt Fuji, Fuji Safari Park, Yeti ski resort, Gurimpa Amusement Park, Chuchan stock farm, Healthy park.
Events	Frankston Sea Festival, Mornington Peninsula Wine Festival.	Mt Fuji apricot festival, Mt Fuji international snowball fight contest, Susono summer festival, Mt Fuji walking festival.
Education	More than 40 primary and secondary schools (state & private).	9 primary schools, 5 junior high schools and 1 senior high.
History	Started as a rural beachside holiday resort with mixed farming. As Melbourne grew more rural land was required for housing. Eventually Frankston became an outer suburb of Melbourne connected by rail and various key road links. Local employment is strong but many people commute to the Melbourne CBD, 1hour away, or to other suburbs for work.	Susono City came into existence in 1971 when the 5 local villages of the area formally merged to create a city. It was once an area controlled by the Shogun Tokugawa who enjoyed hunting in the region. Located at the base of the Japanese Alps, it has a history based on tourist activities, agriculture and more recently light industry. Local employment is strong: some residents commute to Tokyo, 50 minutes away by Shinkanese -bullet train.

SOURCE 3 Frankston-Susono Sister City Proclamation 1982



- 4 Look at Source 3. Briefly summarise the key objectives.

Now work through Sources 4 –13 to see if they have achieved their objectives. Use this grid below to fill in examples of their progress.

Auditing the Frankston Susono Sister City Affiliation

Audit categories	Evidence provided in the sources	Ideas for the future
Culture		
Education		
Customs		
Economic		
Recreation		
Community affairs		
Overall comment		

SOURCE 4 Yazaki Corporation — forging a sister city relationship through community participation

- Yazaki Corporation was established in the 1930s in Japan to make electrical wiring components for the emerging car industry. In 1974 it set up a factory in the Frankston- Seaford area to build wiring harnesses for cars (looms) employing approximately 1500 local people. As the car industry changed so too has the work of Yazaki Australia now called Australian Arrow (AAPL).
- Australian Arrow makes electronic parts, instrument clusters and remote keys that supply Australian car manufacturers.
- In late 1980 Yazaki Vice-President, Ken Muratta, visited the Seaford Yazaki works. He was enthusiastic about creating a sister city relationship with Frankston. The affiliation had the support of the local federal member for Flinders, Hon. Phillip Lynch, Minister for Trade who had encouraged the relationship in 1980 when he visited Yazaki headquarters in Japan.
- In 1981 the Frankston Susono Friendship Association was formed with the involvement of many Yazaki Australia employees, and in the following year the city dignitaries, who visited each other's city, signed formal agreements of a friendship affiliation.
- Australian Arrow continues to support the strong relationship with the local community. It sponsors the Frankston City Library Teddy Bear Picnic, The Frankston Sea Festival and the Carrum Downs Rotary Community Family Day picnic where it encourages children and adults to make art from cardboard and plastic waste from the factory.
- It is also prominent in encouraging environmental projects such as the National Tree Day, having done so since 2002. The Yazaki brothers are well known around the world for their environmental philanthropy and concern for sustainable environmental and economic work practices. In 2006 Australian Arrow won two very prestigious Banksia Environmental Awards for their project Visualising Our Environmental Footprint.
- Mindful of the need to create a happy and stable workforce, AAPL provides considerable benefits to its employees and offers all workers the opportunity to send their 14 year old children to an all expenses paid nine day summer camp in Japan. There they participate in a range of cultural activities alongside children from other Yazaki affiliates around the world.

Interview with Ken Anderson,
Australian Arrow 2008



SOURCE 5 FSFA Youth Programs

Frankston Susono Friendship Association (FSFA) have run a successful Student Exchange Program for the past 25 years where students stay for a nine to 12 month period. We have established educational links at various levels including junior primary, primary and secondary schools, technical and further education institutions and schools focusing on special education.

Student exchange is a great way to broaden your outlook and experience a new culture first hand. By being home hosted you learn to adapt to day to day situations that are made more challenging

by the two languages and an environment completely different from their own. You are introduced to different sports, courses and subjects that you may not of had an opportunity to try at home. Exchange students act as ambassadors by addressing community organisations and other groups in Susono and imparting as much knowledge as they can about their home city and country. In total 31 Frankston students have gone on exchanges to Susono and 36 students from Susono have come to Frankston.

FSFA Celebrating 25 years of Friendship

SOURCE 6

Frankston Sea Festival January 2007 Frankston City Council

Visit the Orient at the creative Japanese workshops and demonstrations. Children and adults can experience traditional Japanese crafts including calligraphy, origami, kite and doll making, or relax while enjoying a Shiatsu massage. Megumi Restaurant will have sushi making displays over the weekend.

Media release Frankston City Council Tuesday,
2 January 2007

SOURCE 7

Japanese Friendship Garden Frankston High

- Work on the garden commenced in 1993 and was completed in 1996. The garden is situated behind a protective stone wall attached to the Senior Campus Library at Frankston High School.
- In February 1997, Mayor of Susono, Dr Ohashi arrived with a delegation to celebrate the Sister Cities 15th anniversary, the highlight being the official opening of the Garden.
- A landscape architect, Harry Lucy from Carlton was recommended as an expert in Japanese style gardens and was employed.
- The Japanese Garden became a reality due to the generous support and commitment of Yazaki Australia, Members of the Frankston Susono Friendship Association (FSFA) Committee and volunteers, Frankston High School, Susono Overseas Friendship Association (SOFA), and Frankston City Council.
- An Australian style garden has also been established in the grounds of Higashi Junior High School in Susono and was built by Phil Harris who lived in Susono while his wife taught English.



Japanese Garden in Frankston

Google Earth and <http://fsfa.frankston.vic.gov.au>

SOURCE 8

Interview with Peter Paterson President of the FSFA

Over the past 25 years we have not been concerned primarily with the economic opportunities that may arise from such a relationship.

It was important to establish a spirit of respect and friendliness between the citizens of Frankston and Susono.

The sister city relationship has given many Frankston youth life changing experiences as: exchange students, members of school groups visiting the city sister, and as members of performing groups playing at venues in Japan.

In 2005 a 20-piece student concert band from Frankston High School performed during Victoria Week at the 2005 World Expo in Aichi.

The official council delegations have also helped to foster stronger community links between the two cities. In alternate years, each city holds a fair to celebrate and promote the other's way of life and culture.

It is gratifying to see many Japanese people visiting Frankston because it has a reputation for being friendly and culturally accepting. They feel comfortable here, and likewise for those of us who have travelled to Susono and other parts of Japan.

The next step for our association and council is to see how we can grow or expand the relationship. We are currently organising a video on the two cities to cross promote the value of tourism. This is one area we can focus on expanding economic benefits through travel. You know people who came on our last trip to Japan were surprised to find that hotels were no more expensive than Australia, food was cheaper, the history and culture was fascinating and the people were very friendly.

We also took three members of the Frankston Business Chamber to explore ways in which similar business or at least related businesses may be able to create a dialogue that could lead to further economic opportunities.

Now that we have such a strong association, it is time to explore and promote greater tourist exchanges, and this in turn may lead to new economic ventures. Without this strong bond, it would be near impossible to explore the economic opportunities.

Interview with Peter Paterson, President of FSFA 2008



SOURCE 9

Frankston Takes out Sister City Award

Frankston City was awarded a major national award at the annual Australian Sister Cities Association Conference held in Darwin (October 2007). It won Best Overall Program for its relationship with the Japanese city of Susono, the sixth time it has taken out this award for its sister city link with Susono. The award is given to the sister city member who has best demonstrated continuity of activity, citizen and community involvement at all levels, and imagination in a wide arrange or projects and activities in building a relationship with its sister city.

Media Release Frankston City Council 15 October 2007



SOURCE 10

Japanese School visits Frankston

In 2002 the Higashi Junior High School Taiko Drum Group from Susono came to Frankston. They were accompanied by the legendary Taiko player Mr Hiromasa Akiyama and Ms Yukari Hirashina a member of his group. They were the national champions.

FSFA Celebrating 25 years of Friendship



SOURCE 11

Christy Ramadge Exchange student 2001-2002

I went on an exchange through the Frankston's sister city relationship with Susono, (FSFA) during my year 10 studies. While I was over in Japan I was given endless opportunities to experience traditional Japanese student life first hand. I attended Fjji Seishin Girls Secondary College over nine months and participated in all of their festivals and concerts. I also participated in after school and weekend activities including Kendo – a Japanese traditional martial art using a bamboo sword. During the time spent there I managed to achieve a black belt equivalent in Kendo which was a major reward for training so hard. I was also quite successful in becoming quite proficient in the language fairly quickly having to use it on a daily basis.

FSFA Celebrating 25 years of Friendship

CONCLUSION

Discuss as a class if this sister city affiliation has met the objectives as set out in their proclamation. Can you think of any things they could do to improve the relationship and experiences for the two communities? Add these in the Ideas For The Future column found on the Auditing the Frankston Susono Sister City Affiliation grid.

SOURCE 12

Sam Warrington 2005 Susono Exchange student

The exchange changed my life in so many ways. Of course, the foods, the language and the culture were very different to Australia. However, I learnt a valuable lesson; people are the same wherever you go in the world, they will care for you like you're their own family. I was suddenly forced to become more independent without my family or friends by my side. I also had to quickly adapt to the Japanese way of life. I must admit at first it was tough, but now I see Japan as my second home, and my host families are not just close friends but are now apart of my family. I remember being terribly homesick in the first two weeks of my stay but now I'm homesick for Japan.

FSFA Celebrating 25 years of Friendship

SOURCE 13

Sam Warrington 2005 Susono Exchange student

- The Japanese Fair in Frankston is a fabulous celebration of all things Japanese and offers a wide range of visual and interactive experiences of traditional Japanese culture, music, art and craft together with the wonders of modern Japan with an emphasis on youth interests, technology and food. The fair attracts a number of Japanese businesses to display their products and services.
- The FSFA assists with the Australian Fair in Susono which is a showcase of Frankston and Australian handcrafts, food, wine and performing arts. In 2005 Frankston High School's band played, sang some traditional Australian songs, taught line dancing, told stories and even performed a few Wiggles' songs.
- The FSFA provides presentations for people wishing to travel to Japan, and visit Susono.
- A Student Exchange Award provided by local company ECS Pty Ltd has been created.
- A Japanese Speech contest for secondary students with more than 50 students participating each year in the three tiered competition. They speak for 3-5 minutes with no notes.
- FSFA have helped fund the Australian garden at Higashi JHS as well the publication of Phil Harris' book One Year in Japan.
- FSFA volunteers have hosted hundreds of guests and students from Susono who have come to visit Frankston over the 25 year affiliation.
- The FSFA has created a strong relationship with the local Japanese community in Melbourne, the Japanese Consul in Melbourne, and many local Japanese businesses, such as the Japan Travel Bureau.
- The FSFA has become the lead agent for Japanese culture and lifestyle on the Mornington Peninsula.

Adapted from local press sources, FSFA sources, FCC media sources and interviews with residents of Frankston

How could you create a sister-city relationship for your city or town?

Now that you have investigated Frankston and Susono, what about your own community? Have you ever thought that it might be worthwhile to explore a sister city relationship with a Japanese city for the city or town in which you live? Maybe one already exists. To find out about the sister city relationships between Australian and Japanese cities go to <www.jlgc.org.au/activities/siscity.html>. This is a page on the Japan Local Government Centre website and you can access their list of sister city relationships and also view the pdf files showing the location of the Australian towns and cities that are affiliated with Japanese cities.

- 1 If you discover that your town or city has a sister city affiliation with a Japanese city, undertake an audit like the one you have just completed in Investigation 3.
- 2 Start by finding out about the Japanese city that is twinned with your town or city. Then look at your town or city. What does it have to offer?
- 3 Contact your local council to start the process of gathering information about the sister city affiliation. Is there a friendship association like the one Frankston has developed? Are there any individuals, groups, businesses or local schools actively involved in promoting the affiliation? Can you see any visible signs in your community that proudly demonstrate the relationship?
- 4 Once you have gathered the evidence use a grid similar to the one on page xxx to help review the evidence you have gathered. How strong is the relationship? Write a report to the council or friendship group encouraging them to keep building the relationship. In your report provide some suggestions and make assessments based on sound evidence. Remember that these relationships are created through the volunteer work of local people. Make sure your comments are constructive.

You may discover that there is no affiliation. Perhaps you can be the person or class that starts the ball rolling in creating a sister city relationship for your town or city.

How do you go about it?

- 1 Create an audit of your town or city to find out about the culture, education, recreation, community interests and economic base that make up your town or city.
- 2 Go to the CLAIR website listed above to find out what cities have already been twinned. Then go to www.japan-guide.com to find out about Japanese cities. You can also search for information on Wikipedia. Decide on a city that you think may be a good partner to your town or city. It might be that you want to have a lot of things in common, or very few. Create a profile on this city using the same categories you did for your own town or city audit.
- 3 Now you are ready to write a submission to the local council, leading community groups, local schools and businesses. In your submission you will need to explore the following areas:
 - brief history of sister city program and its aims
 - the strengths of your town or city
 - a detailed outline of the intended Japanese city
 - the range of benefits that can be created for the communities through such an affiliation
 - identification of people and groups who are interested in helping build such a relationship, and
 - examples of successful partnerships already operating.

Good luck in creating you own sister city relationship, and helping to strengthen the bond between Australia and Japan!

